



BalticGrid-II Project

Using BalticGrid

BalticGrid-II Users' Forum:
<http://support.balticgrid.org>



SA3 - Application integration and support

BalticGrid-II supports scientists using the Project infrastructure and helps new research communities be involved in grid computing. Support teams in Estonia, Latvia, Lithuania and Belarus have been formed to support researchers in integrating their applications in the Project infrastructure.

Visit the Project web site at <http://www.balticgrid.eu> to learn more.

User Support

User support is provided by the SA3 activity for all users from the Baltic States and Belarus.

Do not hesitate to contact us if you are or would like to become a BalticGrid-II user and have:

- questions about BalticGrid-II infrastructure
- problems with BalticGrid-II services
- problems with your grid experiment
- problems with grid-enabling your application.

Please send an email to support@balticgrid.org

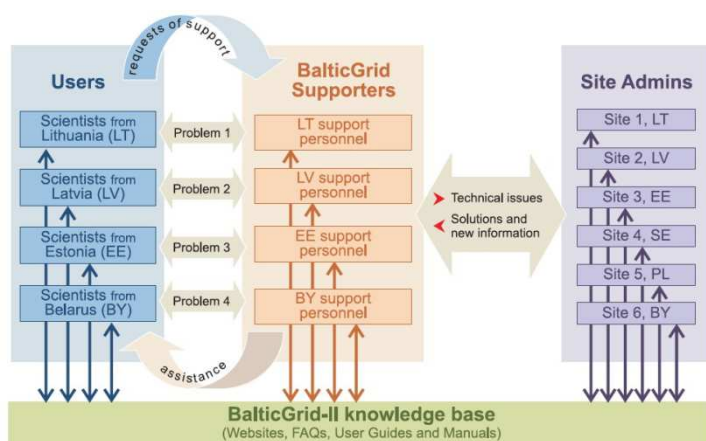


Diagram of users support

BalticGrid-II Users' Forum

Users' Forum is a portal for BalticGrid-II users providing canonical, authoritative and high-quality manuals and instructions on the use of the BalticGrid-II, a computing grid spanning six countries in the Baltic region.



Baltic Grid-II Users' Forum

The portal provides useful materials for users on how to use the grid, and for developers of applications that will be ported to run on the grid. The different sections of the portal are maintained by the experts from the Project.

The web portal has a separate section dealing with each application which is enabled on the grid, with instructions about installing software packages on the grid clusters. Each sections provides a detailed description of the application, together with examples of tasks - ready for submitting to the grid.

Users' Forum provides information about:

- User guides for beginners and advanced users
- Introduction to grid tools and user interfaces
- Virtual Organisations and applications
- Instructions about installing software on grid
- User support information



User interfaces

Managing large-scale computations on the grid might be a challenge. Grid users have different needs for a grid interface. Three different user interfaces are available:

1. gLite command line user interface (gLite version 3.1) is a centrally installed user interface service for all BalticGrid-II or Belarusian Grid certificate owners. This service is essential for users from new scientific groups or organizations in grid who usually do not have access to any gLite user interface service.
2. The aim of the Migrating Desktop Platform is to provide grid users and/or application developers with a framework which hides the details of most Grid services. This advanced graphical user interface allows users to access Grid resources, run applications, monitor experiment progress, visualize and manage data files.



Migrating Desktop interface

3. Gridcom is a simple Web-based grid interface which supports multijob applications and group access to a workspace. It is closely related with the idea and realisation of BalticGrid-II Special Interests Groups.



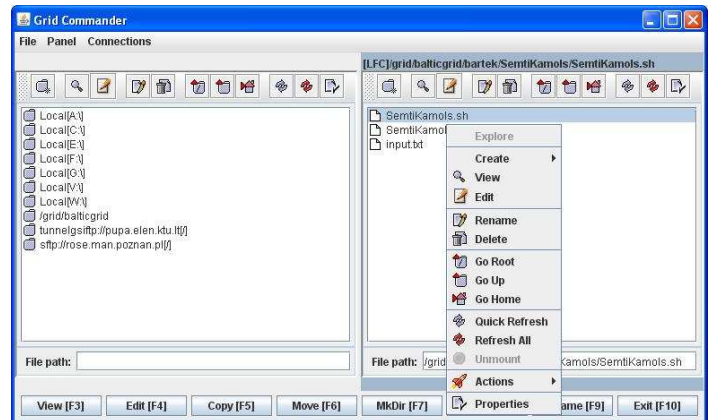
Gridcom interface

In addition to these interfaces, it is also possible to install P-Grade Portal user interface <http://portal.p-grade.hu> The interface will be made available on demand.

Grid tools for Users

There are many useful grid tools that can make life easier for grid users. The BalticGrid-II SA3 team deploys grid tools developed within the BalticGrid-II JRA1 activity, by grid users or provided through the RESPECT program.

1. A very good example of a grid tool is Grid Commander developed by BalticGrid-II JRA1 by Poznan Supercomputing and Networking Center. It is a file management interface similar to the widely used Total/Midnight Commander, which could handle grid data management protocols as e.g. GridFTP, LFC.



Grid Commander for file management in grid

2. BG-II resources monitor (<http://infosite.balticgrid.org>) is another handy and useful tool for grid users.

BalticGrid Infosite
Available resources | Stress tests | Software environment | VOs

Available resources

Site name	Jobs running(waiting)	CPU usage	Storage usage (Gb)
1. AMD64-PSNC.PL	-	-	-
2. BY-UIP	0 (0)	0 of 80	0 of 6962
3. CYFRONET-IA64	-	-	-
4. CYFRONET-LCG2	1228 (0)	1268 of 2384	0 of 19283
5. EENet	0 (10)	0 of 6	1609 of 1956
6. egee.man.poznan.pl	-	-	-
7. IFJ-PAN-BG	25 (0)	30 of 92	-
8. IMCSUL	0 (0)	0 of 3	0 of 95
9. IMCSUL-INF	-	-	-
10. ITPA-LCG2	59 (15)	82 of 98	0 of 200
11. KMI-PRI-LCG2	0 (0)	0 of 12	0 of 64
12. KTU-BG-GLITE	0 (0)	2 of 34	0 of 191
13. KTU-ELEN-LCG2	1 (1)	8 of 13	0 of 1316
14. MIU-LCG2	0 (0)	0 of 16	-
15. PSNC	188 (80)	206 of 569	0 of 5665
16. RTUETf	8 (6)	8 of 25	0 of 1602
17. SU-GRID	-	-	-
18. T2_Estonia	366 (617)	264 of 372	35481 of 74209
19. VDU-IF-LCG2	5 (0)	6 of 8	-
20. VGTU-gLite	1 (0)	0 of 10	42 of 65
21. VU-MIF-LCG2	40 (0)	40 of 144	0 of 3128
22. VU-MIF-TEST	39 (0)	44 of 81	0 of 148
Total	1960 (729)	2358 of 3947	37132 of 114984

call at eeset dot eu

BalticGrid Infosite – grid resources monitor

3. Useful scripts developed by BalticGrid-II users can be found in the Users' Forum.

The RESPECT program (Recommended External Software for EGEE CommuniTies) aims to publicise grid software and services that work well with the EGEE gLite software. The SA3 team is working to make these tools (e.g. Migrating Desktop, Ganga, GridWay, P-Grade Portal) available for BG-II users

Project Director

Åke Edlund
KTH, Stockholm, Sweden
edlund@nada.kth.se

Technical Contact

support@balticgrid.org
<http://support.balticgrid.org>